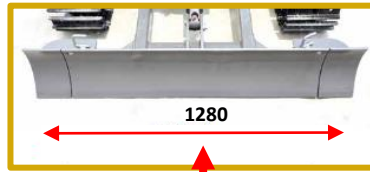


# LOVOL FR18E2-U EXCAVATOR



## PERFORMANCE

### COMPACT DESIGN

WITH A ZERO TAIL SWING DESIGN, THE TURNING RADIUS OF MACHINE IS VERY SUITABLE TO WORK IN NARROW JOBSITES. THE TELESCOPIC CHASSIS, WIDTH-ADJUSTABLE DOZER BLADE AND SPLIT DISMOUNTABLE ROPS MAKE MACHINE IDEAL TO ACCESS ALL AREAS.

### BOOM SIDE SHIFT

THE MAIN BOOM CAN MOVE TO THE LEFT OR RIGHT THROUGH THE BOOM SIDE SHIFT FUNCTION SO THAT THE MACHINE DOES NOT NEED TO BE MOVED FREQUENTLY WHEN WORKING ON NARROW JOBSITES TO DO THE BOUNDARY OPERATION.

### PIPES AND HOSES

THE PIPES AND HOSES ON THE MACHINE ARE COVERED AND PROTECTED TO ENSURE YEARS OF TROUBLE FREE PERFORMANCE.



## COMFORT

### OPERATORS AREA

THE ROPS\OOPS IS COMPLIANT WITH AUSTRALIAN STANDARDS AND ALSO FITTED WITH RETRACTABLE SAFETY BELT. THE LUXURIOUS SEAT WITH ARMREST AND HEADREST REDUCES THE OPERATION FATIGUE DRAMATICALLY. THE LENGTHENED JOY STICK LEVER MAKES THE OPERATING POSITION ERGONOMICALLY CORRECT.

### LOW NOISE DESIGN

LOVOLS ADVANCED DESIGN REDUCES NOISE MAKING OPERATION MORE COMFORTABLE, THE YANMAR ENGINE IS USED DUE TO IS WORLD RENOWNED REPUTATION IN LOW NOISE LEVELS AND PERFORMANCE.

### ROTATING LOCK PIN

LOCKABLE BOOM SWING FOR TRANSPORT AND CONFINED SPACES.

## EFFICIENCY

### SUPERB MATCH

THE POWERFUL YANMAR ENGINE IS PERFECTLY MATCHED WITH JAPANESE HYDRAULIC SYSTEM, WHICH CAN ADJUST OUTPUT POWER ACCORDING TO THE DEMAND OF THE WORKING APPLICATIONS. THE SUPERB MATCH OF, POWER - COMFORT - PERFORMANCE

### ADVANCED HYDRAULIC SYSTEM

THE ARM, BOOM AND ROTARY SYSTEM HAVE A INDEPENDENT PUMP SYSTEM, HIGH HYDRAULIC PUMP OUTPUTS PRODUCE SOFT AND POWERFUL CONRTOL WHILE DIGGING.



## RELIABILITY

### SPECIALISED POWERFUL ENGINE

EQUIPPED WITH A 16HP YANMAR TIER III ENGINE SPECIALLY DESIGNED FOR MINI EXCAVATORS, IT'S A POWERFUL LOW NOISE DESIGNED DIESEL ENGINE. NO ENGINE ECU

### CORE COMPONENTS

ALL CORE COMPONENTS UTILISE FIRST-CLASS PARTS WHICH ARE PRODUCED BY WORLD RENOWNED SUPPLIERS. ESTABLISHING SOLID PARTNERSHIP WITH JAPANESE ENGINEERING ENTERPRISES, LOVOL HAS IMPROVED THE QUALITY AND SERVICE LIFE OF CORE COMPONENTS.

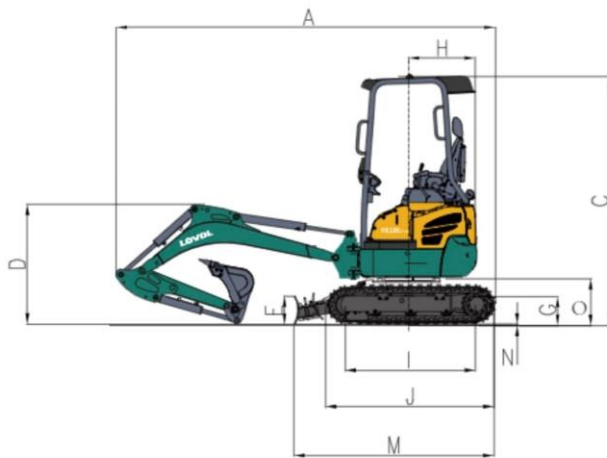
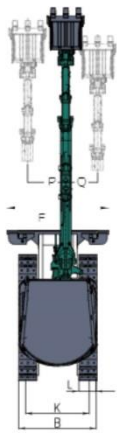
### KEY STRUCTURES

THE MAIN BOOM ADOPTS A ADVANCED BOX HOLLOW STRUCTURE WITH HIGH STRENGTH STEEL. COORDINATED WITH CAST STEEL FRAME AND ROBOTIC WELDING, LOVOL PROVIDES HIGH RELIABILITY. THE NM400 ANTI-WEAR STEEL IS USED ON KEY POSITIONS OF THE ARM AND BUCKET, MAKING THE SERVICE LIFE 30% LONGER THAN STANDARD MATERIALS.



**TANNERTRACK**  
TRACTORS AND EQUIPMENT

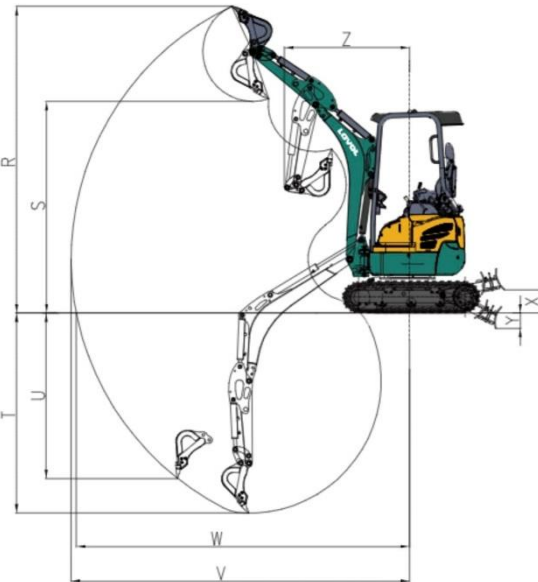
15 INNOVATION WAY,  
PAKENHAM 3810  
PH: 1300 144 988  
PH: 03 5922 4505  
sales@tannertrack.com.au  
[tannertrack.com.au](http://tannertrack.com.au)



## TECHNICAL SPECIFICATIONS

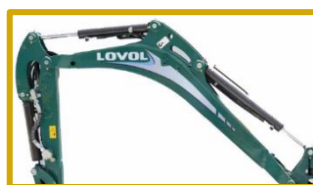
### WORKING RANGE

DOZER BLADE LIFTING HEIGHT	X	266MM
DOZER BLADE FALLING HEIGHT	Y	176MM
MIN. TURNING RADIUS	Z	1443MM



### DIMENSIONS

SHIPPING LENGTH	A	3575MM
SHIPPING WIDTH	B	990MM
SHIPPING HEIGHT	C	2347MM
WORKING DEVICE HEIGHT	D	1120MM
DOZER BLADE HEIGHT	E	258MM
DOZER BLADE LENGTH	F	990/1280
MIN. GROUND CLEARANCE	G	150MM
TAIL TURNING RADIUS	H	640MM
WHEEL TREAD	I	1230MM
TRACK LENGTH	J	1593MM
TRACK GAUGE	K	760/1050
TRACK SHOE WIDTH	L	230MM
SHIPPING GROUND LENGTH	M	1895MM
RUBBER TRACK	N	16.5MM
GROUND CLEARANCE OF COUNTER WEIT	O	438MM
WORKING DEVICE LEFT OFFSET DISTANCE	P	480MM
WORKING DEVICE RIGHT OFFSET DISTANCE	Q	400MM
MAX. DIGGING HEIGHT	R	3540MM
MAX. DUMPING HEIGHT	S	2440MM
MAX. DIGGING DEPTH	T	2310MM
MAX. VERTICAL DIGGING DEPTH	U	1910MM
MAX. DIGGING RADIUS	V	3905MM
MAX. GROUND DIGGING RADIUS	W	3845MM



# TANNER TRACK

TRACTORS AND EQUIPMENT

15 INNOVATION WAY,  
PAKENHAM 3810  
PH: 1300 144 988  
PH: 03 5922 4505  
sales@tannertrack.com.au  
[tannertrack.com.au](http://tannertrack.com.au)

## STANDARD CONFIGURATIONS

- TELESCOPIC CHASSIS
- SAFETY BAR LOCK
- SPLIT DISMOUNTABLE ROPS / FOPS
- SAFETY BELT
- 12V POWER BATTERY
- HEAD REST
- TOOLBOX
- GLOVE COMPARTMENT
- 400MM STANDARD BUCKET

- LED WORKING LIGHT
- AUXILIARY PIPELINE
- RUBBER TRACKS
- PILOT ENERGY ACCUMULATOR
- TRANSFER PUMP
- SEAT (INCLUDING BACK EXTENSION)
- ROTARY LOCKING PIN
- HAMMER PIPING
- HYDRAULIC QUICK HITCH OR TILTING QUICK HITCH



**LOVOL**  
FR18E2-U EXCAVATOR